

MACHEREY-NAGEL data export software for URYXXON[®] 500 / Relax & QUANTOFIX[®] Relax

Instructions

V 1.03

www.mn-net.com



MACHEREY-NAGEL GmbH & Co. KG · Neumann-Neander-Str. 6–8 · 52355 Düren · Germany

Germany

and international:

Tel.: +49 24 21 969-0

Fax: +49 24 21 969-199

E-mail: info@mn-net.com

Switzerland:

MACHEREY-NAGEL AG

Tel.: +41 62 388 55 00

Fax: +41 62 388 55 05

E-mail: sales-ch@mn-net.com

France:

MACHEREY-NAGEL EURL

Tel.: +33 388 68 22 68

Fax: +33 388 51 76 88

E-mail: sales-fr@mn-net.com

USA:

MACHEREY-NAGEL Inc.

Tel.: +1 484 821 0984

Fax: +1 484 821 1272

E-mail: sales-us@mn-net.com

Content

| | |
|--|----|
| General description | 3 |
| System requirements | 3 |
| Software installation | 4 |
| Computer connection | 4 |
| Driver installation under Windows XP | 4 |
| Data export | 5 |
| End user license agreement | 8 |
| Change history | 11 |



General description

This data export software can be used to gether with the following instruments:

- URYXXON® 500
- URYXXON® Relax
- QUANTOFIX® Relax

The software is only meant to transfer saved data to a computer. The received data can then be save das and Excel / Open Office spread sheet or as plain text.

System requirements

- PC running Windows XP / Vista / 7
- NETFRAMEWORK 4.0 (included in delivery)
- Serial or USB port



Software installation

The following installation instructions are applicable to MS Windows XP / Vista / 7.

1. Open the folder "Data „Data Export Software Setup“
2. Start the file „Setup“
3. Confirm the security question (Vista / 7)
4. If running Windows XP, you may have to install NETFRAMEWORK 4. If this is necessary, confirm the query that pops up in a new window. The framework will be installed automatically from the internet (if you have an internet connection). In case you don't have internet access, chose the NETFRAMEWORK 4 file which is in folder XYZ of the software.
5. Within the following set-up program, you need to chose the installation directory first.
6. Confirm your selection
7. The installation starts
8. Confirm the second security question „User account control“ (Vista / 7)
9. The installation is
10. On your desktop, you will find a short-cut to the program

Computer connection

Connect the instrument to your computer using a USB or RS232 cable. If you use Windows Vista oder / 7, the computer recognizes the instrument automatically. For Windows XP, you have to install the respective drivers (which are included in the delivery).

Note: *If you want to read the data using the USB port, make sure the correct COM-port has been selected and that the connection is opened prior to sending data. If this is not the case, an error message can occur. To correct it, simply turn the instrument on and off again.*


Driver installation under Windows XP

When running Windows XP, the instrument is recognized automatically, but for successful operation additional drivers need to be installed. A Wizard guides you through the installation. If you have an existing internet connection, the drivers are installed automatically. If there is no internet connection available, you can find the drivers on the software USB stick or you can download them from the MN homepage. In this case, you need to specify the directory where the files are located.



Data export

Once you have successfully connected the instrument, you can start to export data:

1. Press the .exe file  **StripReaderDataExport** to start the software
2. The software screen appears:

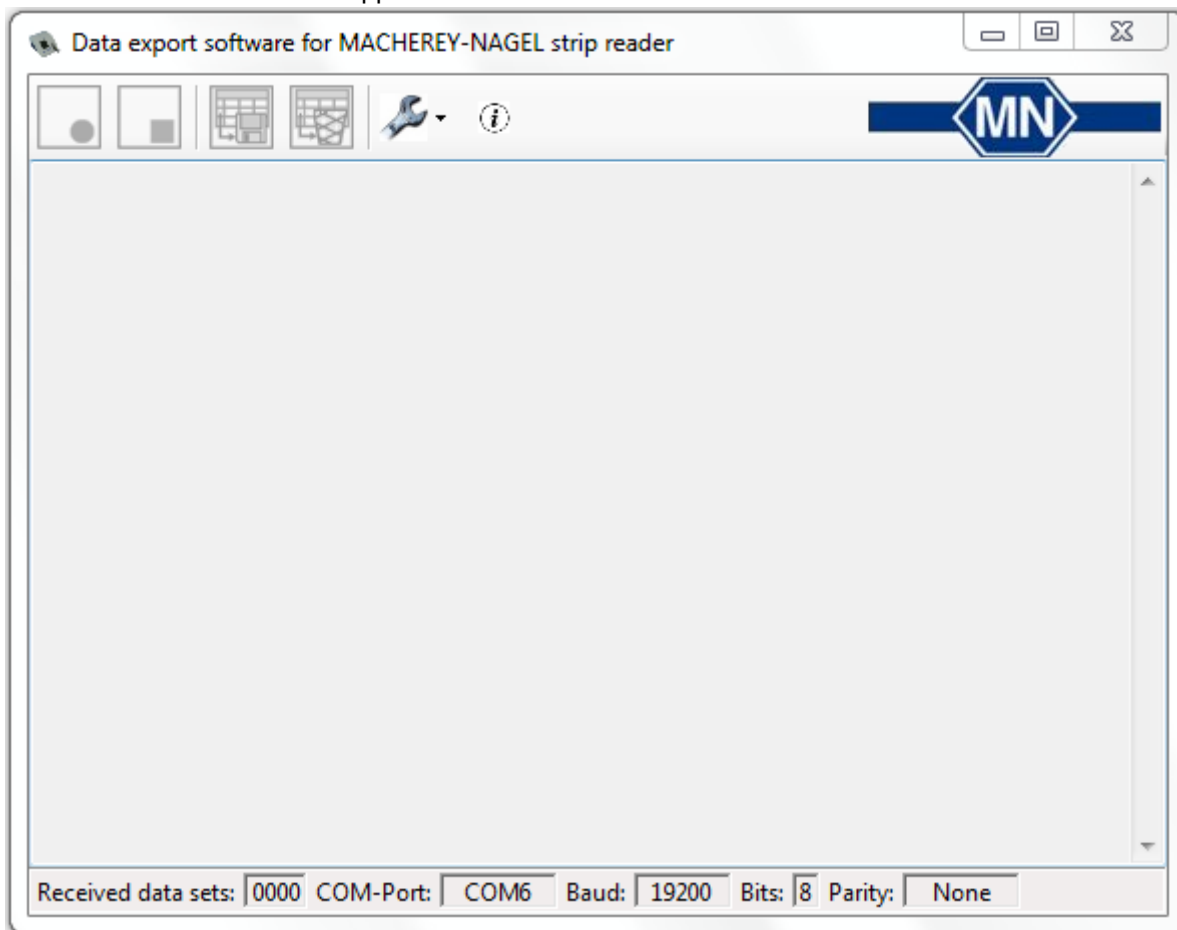


Fig. 1 Start screen

3. When using the software for the first time, you need to define the COM-port and instrument type. To do so, press the wrench symbol in the upper menu bar:

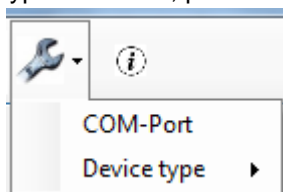


Fig. 2 Select COM-port and instrument type

4. First, select the option COM-Port and activate the port indicated. If the software doesn't show a COM-port automatically, you can find it under "Control Panel" → "Device Manager" → "PC connections"
5. Under the option „instrument type“, you need to define the instrument. Select your instrument from the list.
6. The settings made when first using the software will be saved and only have to be changed if you want to connect a different instrument type. As soon as you have defined COM-port and instrument type, the "open connection" button is activated.



Fig. 3 Open connection

7. Press the button to connect the instrument to the software.
8. The button on the right „close connection“ will be activated. Now you can open data sets in the instrument using the memory function and then send them to the computer (you can find details on the instrument memory and on how to send data in the instrument manual).
9. The data is transferred to the software screen:

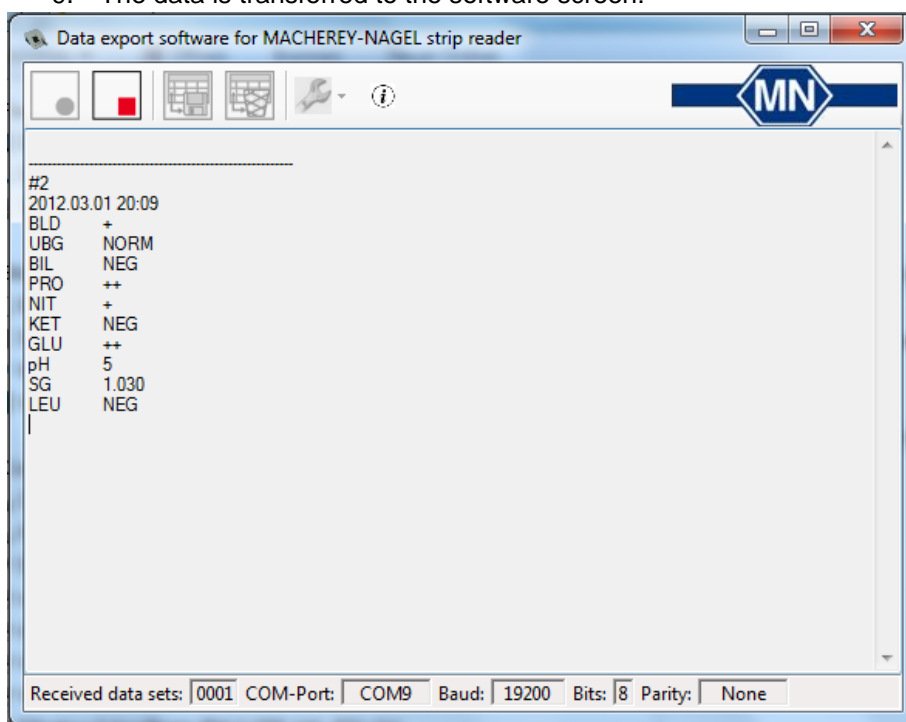


Fig. 4 Software start screen with a data set

10. To then transfer the data to an Excel spreadsheet, you need to deactivate the connection first. To do so, click on the "close connection".

- Once the connection is closed, the buttons „save received data sets“ and „delete received data sets“ are activated:

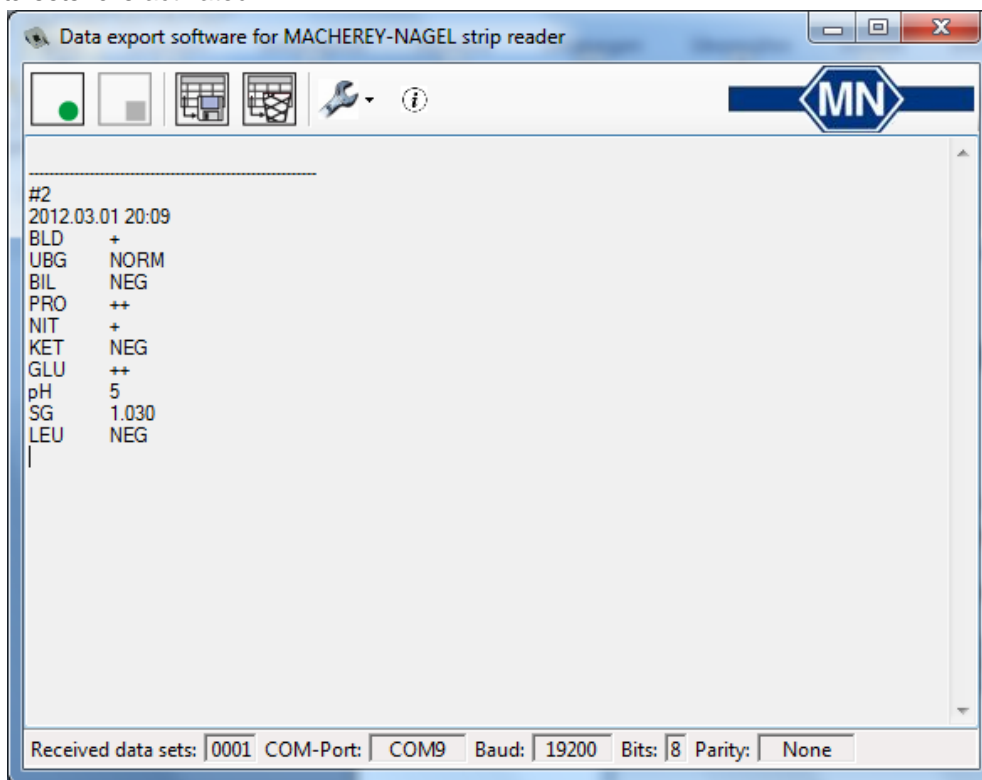


Fig. 5 Start screen with data set and closed connection

- To save the data, press „save received data sets“- A new window appears in which you can define where you want to save the data. Once saving the data has been successful, you can open a table with the respective data. As soon as you have saved the data, it is removed from the start screen. Additionally, you can delete saved data from the start screen. To do so, press “delete received data sets”.



Fig. 6 Save received data sets / Delete received data sets

Note: On some computers, XML files cannot be opened with a spread sheet program automatically (MS Excel, OpenOffice, ...), as they are linked to another program. In this case, you will receive a notification after having saved the data. In this case, open your spread sheet program first, and then open the saved data via the program.

- You also have the option to save the received data sets in text format. To do so, highlight the relevant data in the start screen and copy it to the clip board. The copied data can be saved in almost any text processing program
- To export additional data, activate the connection again and follow the steps above.

End user license agreement

THIS END USER LICENSE AGREEMENT IS MADE BETWEEN YOU AND MACHEREY-NAGEL GMBH & CO.KG ('MACHEREY-NAGEL'). PLEASE READ THIS CONTRACT CAREFULLY. BY INSTALLING OR USING ALL OR ANY PORTION OF THE SOFTWARE YOU ACCEPT ALL THE TERMS AND CONDITIONS OF THIS AGREEMENT. YOU AGREE THAT THIS AGREEMENT IS ENFORCEABLE LIKE ANY WRITTEN NEGOTIATED AGREEMENT SIGNED BY YOU. IF YOU DO NOT AGREE; DO NOT USE THIS SOFTWARE. IF YOU ACQUIRED THE SOFTWARE ON TANGIBLE MEDIA (e.g. CD) WITHOUT AN OPPORTUNITY TO REVIEW THIS LICENSE AND YOU DO NOT ACCEPT THIS AGREEMENT; YOU MAY OBTAIN A REFUND OF ANY AMOUNT YOU ORIGINALLY PAID IF YOU: (A) DO NOT USE THE SOFTWARE AND (B) RETURN IT; WITH PROOF OF PAYMENT, TO THE LOCATION FROM WHICH IT WAS OBTAINED WITHIN THIRTY (30) DAYS OF THE PURCHASE DATE.

This End User License Agreement ('the Agreement') sets forth the terms and conditions under which you are licensed to use the Software. Software means (A) all the contents of the delivered CD-ROM (s) or other storage media with which this Agreement is provided. This contains digital images, stock photographs, related explanatory written materials, fonts; and (B) all upgrades and updates and copies of the software, provided by delivered storage media or download via the www.

MN grants you the non-exclusive, permanent, (transferable under provisions of this contract) license as long as you comply with the terms and conditions of this End User License Agreement.

This is a license agreement and not an agreement for sale.

1. General Use

You may install the Software only once on your compatible computer or another storage device media.

You may install one copy of the Software on a single file server for the purpose of downloading and installing the Software onto a hard disk or other storage device media on one End User Computer. No other network is permitted.

You may make one backup copy of the Software, provided that your backup copy is not installed or used on any computer.

2. Copyright

The Software and any copies that you make are the intellectual property of and are owned by MACHEREY-NAGEL. The structure, organization and code of the Software are valuable trade secrets and confidential information of MACHEREY-NAGEL.

The Software is protected by United States Copyright Law, European and German Copyright Laws, international treaty provisions and applicable laws of the country in which it is being used.

Any copies that you are permitted to make pursuant to this Agreement must contain the same copyright and other proprietary notices that appear on or in the Software.

You agree not to modify, adapt, translate, decompile, disassemble or otherwise attempt to discover the source code of the Software.

3. Transfer

You may not rent, lease, sublicense or lend the Software. You may, however, transfer all your rights to use the Software to another person or legal entity provided that 1. you transfer this Agreement and the Software (including all copies, Updates, prior versions) to such person or entity and 2. that you retain no copies (including copies stored on Computer or other storage media) and 3. that the receiving party accepts the terms and conditions of this Agreement.

www.mn-net.com



MACHEREY-NAGEL GmbH & Co. KG · Neumann-Neander-Str. 6-8 · 52355 Düren · Germany

Germany

and international:

Tel.: +49 24 21 969-0

Fax: +49 24 21 969-199

E-mail: info@mn-net.com

Switzerland:

MACHEREY-NAGEL AG

Tel.: +41 62 388 55 00

Fax: +41 62 388 55 05

E-mail: sales-ch@mn-net.com

France:

MACHEREY-NAGEL EURL

Tel.: +33 388 68 22 68

Fax: +33 388 51 76 88

E-mail: sales-fr@mn-net.com

USA:

MACHEREY-NAGEL Inc.

Tel.: +1 484 821 0984

Fax: +1 484 821 1272

E-mail: sales-us@mn-net.com

4. Limited Warranty

MACHEREY-NAGEL warrants you that the Software will perform substantially in accordance with the documentation for a one-year-period following your receipt of the Software.

To make a warranty claim, you must return the Software to the location where you obtained it along with proof of purchase and a written error description within the period set forth in the preceding section.

If the Software does not perform substantially in accordance with the documentation, the entire liability of MACHEREY-NAGEL and your exclusive remedy shall be limited to either, at MACHEREY-NAGEL's option, the replacement of the Software or the refund of the license fee you paid for the Software.

For replacement Software MACHEREY-NAGEL shall grant the limited warranty of the preceding section only for the rest of the one-year-period following the date of receipt of the original Software.

5. Exclusivity of Warranty

Except of the preceding section 4 MACHEREY-NAGEL makes no other warranty. This warranty is exclusive.

MACHEREY-NAGEL AND ITS SUPPLIERS DO NOT AND CANNOT WARRANT THE PERFORMANCE OR RESULTS YOU MAY OBTAIN BY USING THE SOFTWARE OR USING HARDWARE THAT IS NOT COMPATIBLE TO THE SOFTWARE. THE PRECEDING LIMITED WARRANTY STATES THE SOLE AND EXCLUSIVE REMEDIES FOR MACHEREY-NAGEL AND ITS SUPPLIERS.

EXCEPT FOR THE PRECEDING LIMITED WARRANTY; AND FOR ANY WARRANTY WHICH CANNOT BE EXCLUDED OR LIMITED BY COMPULSORY LAW; MACHEREY-NAGEL AND IST SUPPLIERS MAKE NO WARRANTIES OR CONDITIONS; EXPRESS; IMPLIED OR STATUORY; AS TO ANY OTHER MATTERS; INCLUDING BUT NOT LIMITED TO NON- INFRINGEMENT OF THIRD PARTY RIGHTS; MERCHANTABILITY; SATISFACTORY QUALITY OR FITNESS FOR ANY PARTICULAR PURPOSE.

Modified or manipulated Software is excluded from warranty.

To the Maximum extent permitted by applicable law, MACHEREY-NAGEL and ist suppliers shall not be liable for any other damages whatsoever (including without limitation, damages for loss of business profits, business interruption, loss of business information, or other pecuniary loss) arising out of the use or inability to use the Software or the provision of or failure to provide support services (including without limitation, through negligence), even if MACHEREY-NAGEL has been advised of the possibility of such damages. In any case, MACHEREY-NAGEL's entire liability under any provision of this agreement shall be limited to the amount actually paid by you for the software and/or any support services; provided, however, if ou have entered into a MACHEREY-NAGEL Support Agreement, MACHEREY-NAGEL's entire liability regarding support services shall be governed by the terms of that agreement.

To the extent that you could have avoided damages by taking reasonable care, including by backing up your software and other files, MACHEREY-NAGEL will not be liable for such damages.

The limitation and / or exclusion of warranty shall extend to any third party claims.



Nothing contained in this Agreement shall prejudice the statutory rights of any party dealing as a consumer. Nothing contained in this Agreement limits MACHEREY-NAGEL's liability to you in the event of death or personal injury resulting from MACHEREY-NAGEL's negligence.

7. Applicable Law ,Jurisdiction and General Provisions

This Agreement will be governed by and construed in accordance with the laws of the Federal Republic of Germany whose courts shall have exclusive jurisdiction over all disputes relating to this Agreement.

If any part of this Agreement is found void and unenforceable, it will not affect the validity of the balance of the Agreement, which shall remain void and enforceable according to its terms.

This Agreement shall automatically terminate upon failure by you to comply with its terms, in which event you must destroy all copies of the software.

This Agreement may only be modified by a writing signed by an authorized officer of MACHEREY-NAGEL.

8. Address

Should you have any questions concerning this Agreement, or if you desire to contact MACHEREY-NAGEL, please use the following address:

MACHEREY-NAGEL GmbH & Co.KG
 Neumann-Neander Str. 6-8
 D - 52355 Düren
 sales-de@mn-net.com



Change history

| Version | Changes made | Date |
|---------|--------------|------|
|---------|--------------|------|

