

visocolor® ECO Schwimmbad (freies Chlor)

Swimming Pool (free chlorine) / Piscine (chlore libre) / Piscina (cloro libre)

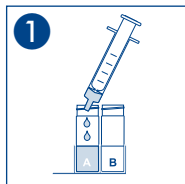


Messbereich / Range / Domaine de mesure / Rango

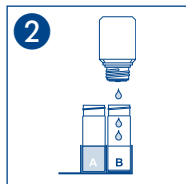
0.1 - 2.0 mg/l Cl₂

REF 931 090

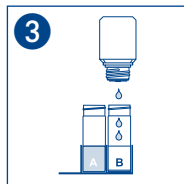
931 290



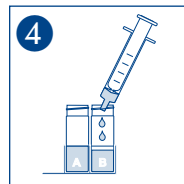
1 x 5 ml Probe
Sample
Echantillon
Muestra



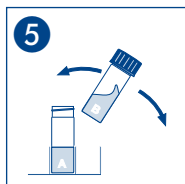
3 ∩ Cl₂-1



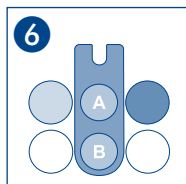
3 ∩ Cl₂-2



1 x 5 ml Probe
Sample
Echantillon
Muestra



Schütteln
Shake
Agiter
Agitar



Messung
Measurement
Mesure
Medición



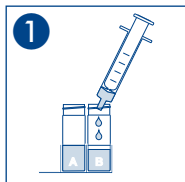
Meerwasser
Sea water
Eau de mer
Agua de mar

visocolor® ECO Schwimmbad (pH) Swimming Pool (pH) / Piscine (pH) / Piscina (pH)

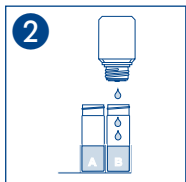


Messbereich / Range / Domaine de mesure / Rango
pH 6.9 - 8.2

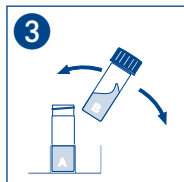
REF 931 090
931 290



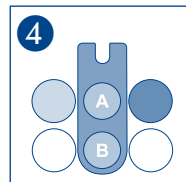
1
2 x 5 ml Probe
Sample
Echantillon
Muestra



2
2 ∩ pH-1



3
Schütteln
Shake
Agiter
Agitar



4
Messung
Measurement
Mesure
Medición



Meerwasser
Sea water
Eau de mer
Agua de mar