

gesamt-Phosphat 5

total Phosphate / Fosfato total

Test 0-81

REF 985 081



Rundküvettentest / Tube test

Test en cuves rondes / Prueba en cubeta cilíndrica

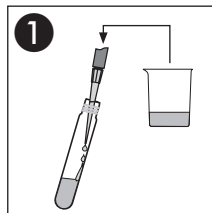
690 nm

Method(e) / Método

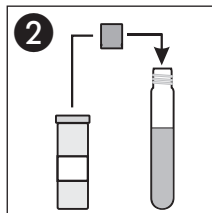
0811

0812

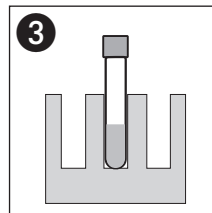
0.20–5.00 mg/L P
0.5–15.0 mg/L PO₄³⁻



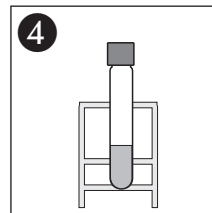
1.0 mL Probe
Sample
Echantillon
Muestra



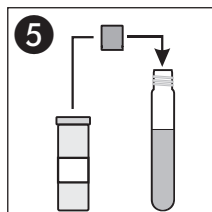
1 x NANOFIX R2



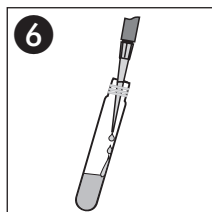
120 °C / 30 min
oder / or / ou / o
100 °C / 1 h



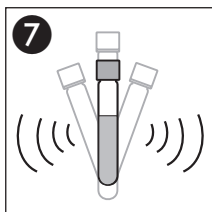
Abkühlen lassen
Allow to cool
Laisser refroidir
Dejar enfriar



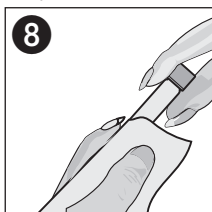
1 x NANOFIX R3



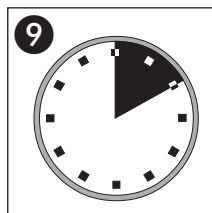
200 µL R4



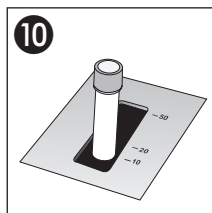
Schütteln
Shake
Agiter
Agitar



Säubern
Clean
Nettoyer
Limpiar



10'00 min



Messung
Measurement
Mesure
Medición