

# ortho-Phosphat 15

## ortho Phosphate / orto Fosfato

**Test 0-80**

REF 985 080



Rundküvettest / Tube test

Test en cuves rondes / Prueba en cubeta cilíndrica

0.30–15.00 mg/L PO<sub>4</sub>-P

1.0–45.0 mg/L PO<sub>4</sub><sup>3-</sup>

0.7–34.5 mg/L P<sub>2</sub>O<sub>5</sub>

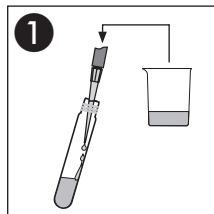
690 nm

Method(e) / Método

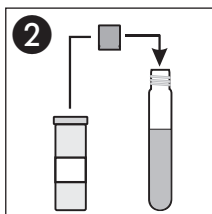
0805

0806

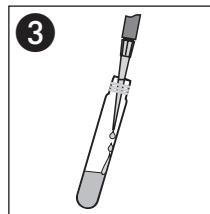
0804



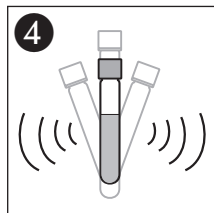
**1**  
500 µL Probe  
Sample  
Echantillon  
Muestra



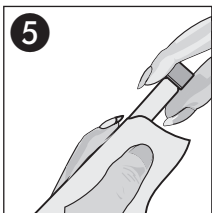
**2**  
1 x NANOFIX R3



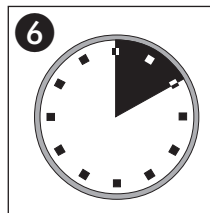
**3**  
200 µL R4



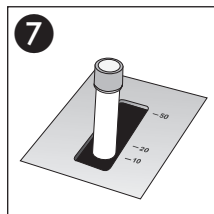
**4**  
Schütteln  
Shake  
Agiter  
Agitar



**5**  
Säubern  
Clean  
Nettoyer  
Limpiar



**6**  
10'00 min



**7**  
Messung  
Measurement  
Mesure  
Medición