

# gesamt-Phosphat 15

## total Phosphate / Fosfato total

**Test 0-80**

REF 985 080



Rundküvettentest / Tube test

Test en cuves rondes / Prueba en cubeta cilíndrica

690 nm

Method(e) / Método

0.30–15.00 mg/L P

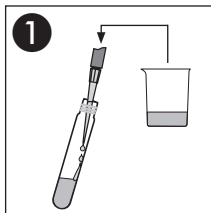
1.0–45.0 mg/L  $\text{PO}_4^{3-}$

0.7–34.5 mg/L  $\text{P}_2\text{O}_5$

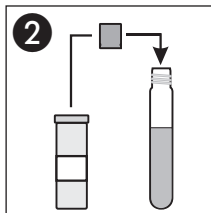
**0801**

**0802**

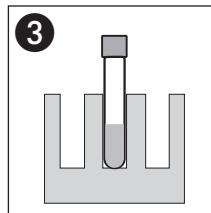
**0803**



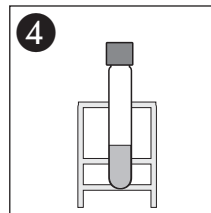
**500 µL** Probe  
Sample  
Echantillon  
Muestra



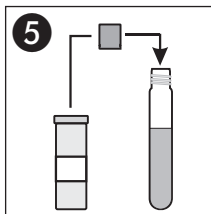
**1 x NANOFIX R2**



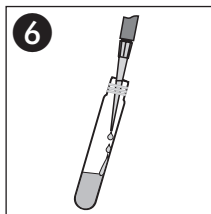
**120 °C / 30 min**  
oder / or / ou / o  
**100 °C / 1 h**



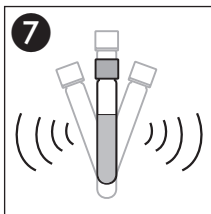
Abkühlen lassen  
Allow to cool  
Laisser refroidir  
Dejar enfriar



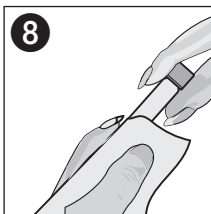
**1 x NANOFIX R3**



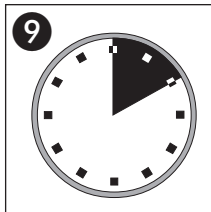
**200 µL R4**



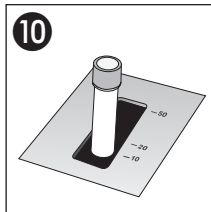
Schütteln  
Shake  
Agiter  
Agitar



Säubern  
Clean  
Nettoyer  
Limpiar



**10'00 min**



Messung  
Measurement  
Mesure  
Medición