

# Phenol-Index 5

## Phenolic index / Indice phénol / Indice fenolico

**Test 0-74**   
REF 985 074  
+ 918 929 (10 mm)

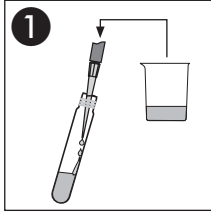
Rundküvettentest / Tube test  
Test en cuves rondes / Prueba en cubeta cilíndrica

470 nm

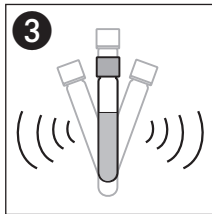
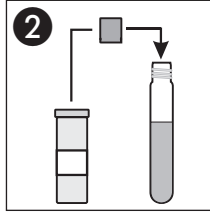
Method(e) / Método  
1742

0.2–5.0 mg/L

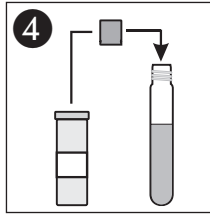
**Nullwert / Blanc value / Zéro / Cero**



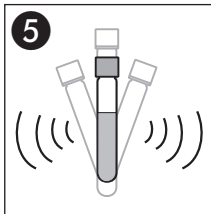
**1**  
4.0 mL dest. Wasser  
dist. water  
d'eau distillée  
agua dest.



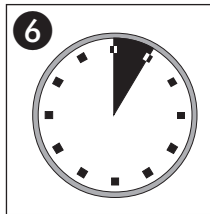
**3**  
Schütteln  
Shake  
Agiter  
Agitar



**4**  
1 x NANOFIX R3

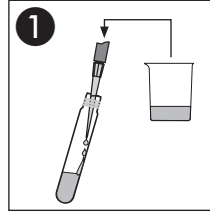


**5**  
Schütteln  
Shake  
Agiter  
Agitar

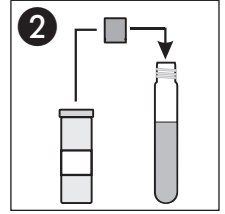


**6**  
5'00 min

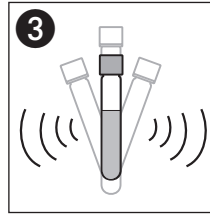
**Messwert / Sample / Echantillon / Muestra**



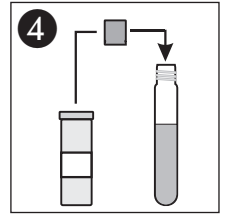
**1**  
4.0 mL Probe  
Sample  
Echantillon  
Muestra



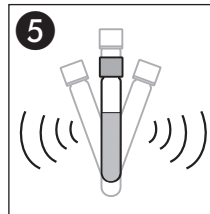
**2**  
1 x NANOFIX R2



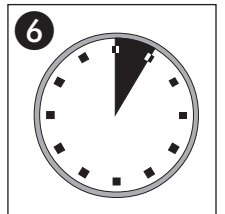
**3**  
Schütteln  
Shake  
Agiter  
Agitar



**4**  
1 x NANOFIX R3



**5**  
Schütteln  
Shake  
Agiter  
Agitar



**6**  
5'00 min