

# Chlordioxid 5

Chlorine dioxide / Dioxyde de chlore /  
Cloro dióxido

**Test 0-18**

REF 985 018



Rundküvettentest / Tube test

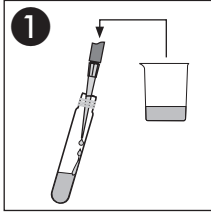
Test en cuves rondes / Prueba en cubeta cilíndrica

540 nm

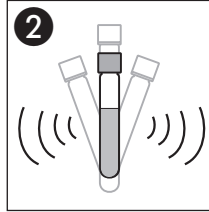
Method(e) / Método

0181

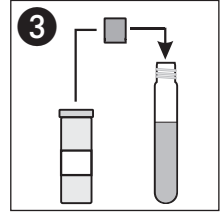
0.15–5.00 mg/L ClO<sub>2</sub>



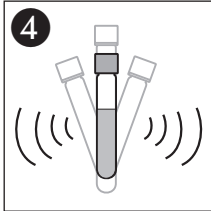
**1**  
4.0 mL Probe  
Sample  
Echantillon  
Muestra



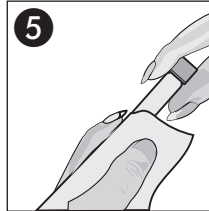
**2**  
Schütteln  
Shake  
Agiter  
Agitar



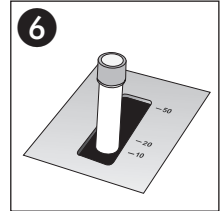
**3**  
1 x **NANOFIX R2**



**4**  
Schütteln  
Shake  
Agiter  
Agitar



**5**  
Säubern  
Clean  
Nettoyer  
Limpiar



**6**  
Messung  
Measurement  
Mesure  
Limpiar