

# visicolor® ECO Kieselsäure

Silica/Silice

690 nm

Method(e) / Método

5331

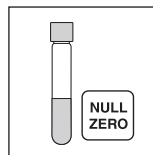
0.2–3.0 mg/L SiO<sub>2</sub>

5332

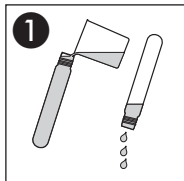
0.1–1.4 mg/L Si

**Test 5-33**

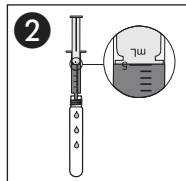
REF 931 233



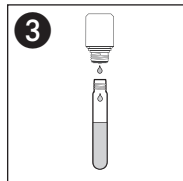
Probe / sample  
échantillon / muestra



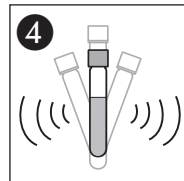
1  
Küvetten spülen  
Rinse test tubes  
Rincer les éprouvettes  
Lavar los tubos



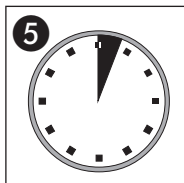
2  
5 mL Probe  
Sample  
Echantillon  
Muestra



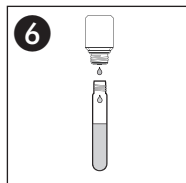
3  
5 ∆ SiO<sub>2</sub>-1



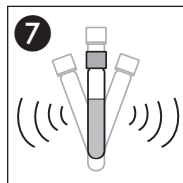
4  
Schütteln  
Shake  
Agiter  
Agitar



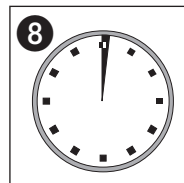
5  
3'00 min



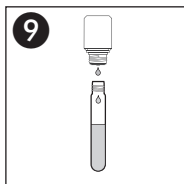
6  
5 ∆ SiO<sub>2</sub>-2



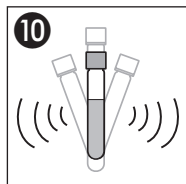
7  
Schütteln  
Shake  
Agiter  
Agitar



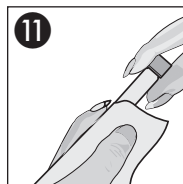
8  
1'00 min



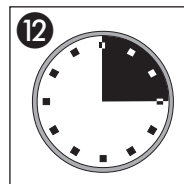
9  
5 ∆ SiO<sub>2</sub>-3



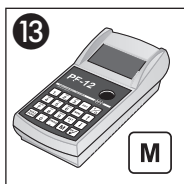
10  
Schütteln  
Shake  
Agiter  
Agitar



11  
Säubern  
Clean  
Nettoyer  
Limpiar



12  
15'00 min



Messung  
Measurement  
Mesure  
Medición

Meerwasser  
Sea water  
Eau de mer  
Agua de mar

