

visicolor® ECO Cyanid

Cyanide / Cyanure / Cianuro

Test 5-22

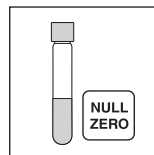
REF 931 222

690 nm

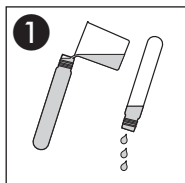
Method(e) / Método

5221

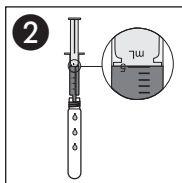
0.01–0.20 mg/L CN⁻



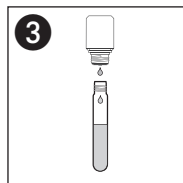
Probe / sample
échantillon / muestra



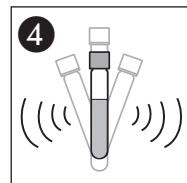
1
Küvetten spülen
Rinse test tubes
Rincer les éprouvettes
Lavar los tubos



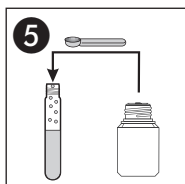
2
5 mL Probe
Sample
Echantillon
Muestra



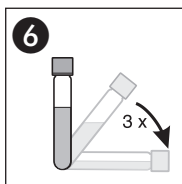
3
5 ∆ CN-1



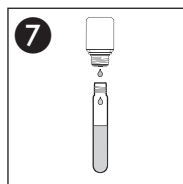
4
Schütteln
Shake
Agiter
Agitar



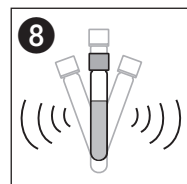
5
CN-2



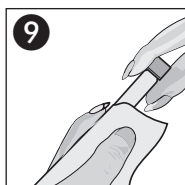
6
Umschwenken
Shake gently
Secouer légèrement
Mezclar volteándolo



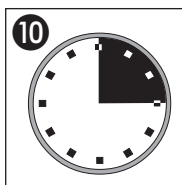
7
5 ∆ CN-3



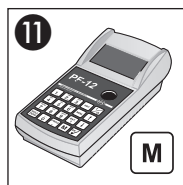
8
Schütteln
Shake
Agiter
Agitar



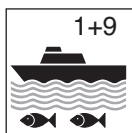
9
Säubern
Clean
Nettoyer
Limpiar



10
15'00 min



11
Messung
Measurement
Mesure
Medición



1+9
Meerwasser
Sea water
Eau de mer
Agua de mar