

# visicolor® ECO Chlorid

Chloride / Chlorure / Cloruro

470 nm

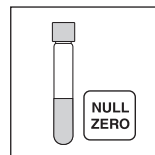
Method(e) / Método

5181

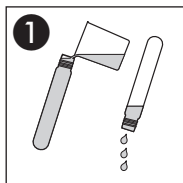
1–50 mg/L Cl<sup>-</sup>

## Test 5-18

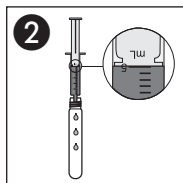
REF 931 218



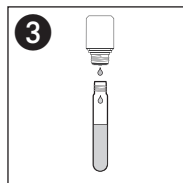
Probe / sample  
échantillon / muestra



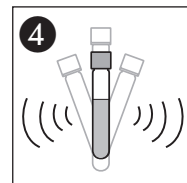
**1**  
Küvetten spülen  
Rinse test tubes  
Rincer les éprouvettes  
Lavar los tubos



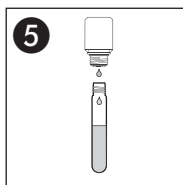
**2**  
5 mL Probe  
Sample  
Echantillon  
Muestra



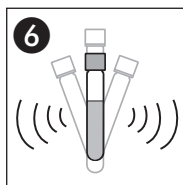
**3**  
10  $\Delta$  Cl-1



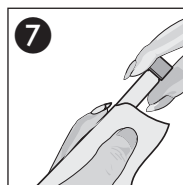
**4**  
Schütteln  
Shake  
Agiter  
Agitar



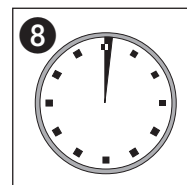
**5**  
10  $\Delta$  Cl-2



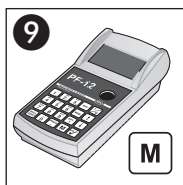
**6**  
Schütteln  
Shake  
Agiter  
Agitar



**7**  
Säubern  
Clean  
Nettoyer  
Limpiar



**8**  
1'00 min



Messung  
Measurement  
Mesure  
Medición



Meerwasser  
Sea water  
Eau de mer  
Agua de mar