

visicolor® ECO Chlor 6 (gesamt)

Chlorine (total) / Chlore (totale) / Cloro (total)

540 nm

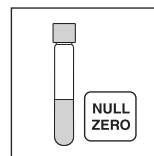
Method(e) / Método

5172

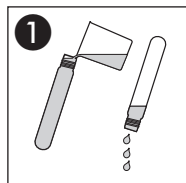
0.05–6.00 mg/L Cl₂

Test 5-17

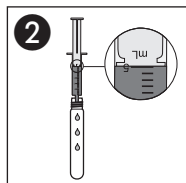
REF 931 217



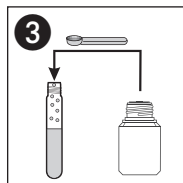
Probe / sample
échantillon / muestra



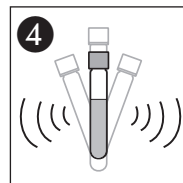
1
Küvetten spülen
Rinse test tubes
Rincer les éprouvettes
Lavar los tubos



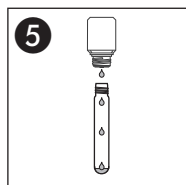
2
5 mL Probe
Sample
Echantillon
Muestra



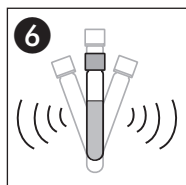
3
1  Cl₂-1



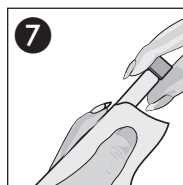
4
20 s Schütteln
Shake
Agiter
Agitar



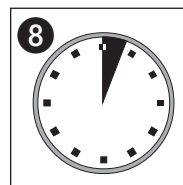
5
3  Cl₂-2



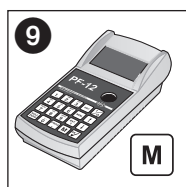
6
Schütteln
Shake
Agiter
Agitar



7
Säubern
Clean
Nettoyer
Limpiar



8
3'00 min



Messung
Measurement
Mesure
Medición



Meerwasser
Sea water
Eau de mer
Agua de mar